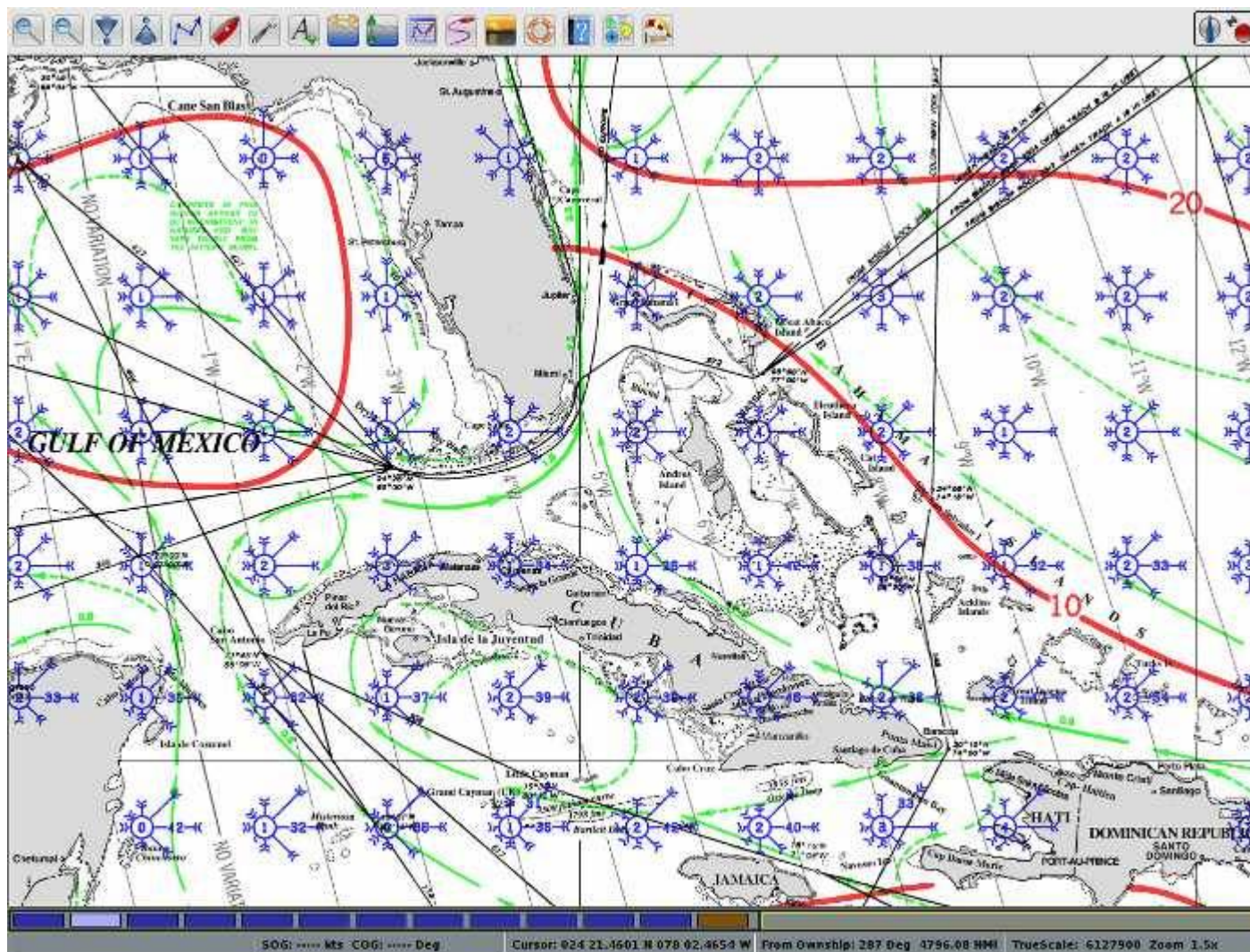


# US Pilot Charts

An image based version which works with Opencpn. Slightly outdated.

**Note:** Climatology Plugin has a true digital version of pilot charts that provides NOAA 35 year average monthly wind, currents, water & surface temps, etc. which can be used with Weather\_Routing Plugin.



All [US Pilot Charts](#) are available for download through the integrated chart downloader plugin and also below for manual download, in the **BSB ver2** electronic Raster Chart format.

The conversion from the official pdf files to BSB/kap files was done by the OpenCPN team.

The Latest version was Published January 1st 2011 and have these updates:

- \* There is a new clearer naming scheme for the files.
- \* The Chart Names are changed to reflect the months more clearly.
- \* The Charts now have a built in dimming palette for dawn/dusk/night viewing.
- \* All charts now are compressed to 7z files. This is a superior compression algorithm, resulting in smaller files and faster downloads.

- Download this open source free software [www.7-zip.org/](http://www.7-zip.org/).
- For Mac OSX, try <http://www.kekaosx.com/en/>.

\* OpenCPN has a limit of 100 charts in the ChartBar. When this limit is reached, the largest scale chart will be dropped. If all Pilot Charts are loaded at the same time, there are many areas where the different Pilot Charts overlap. Be very careful when navigating in these areas as the larger scale, more detailed charts, may not be available.

\* For this reason, when underway, as opposed to planning a passage, it makes sense to only have one or two sets of Pilot Charts loaded in OpenCPN, covering the actual route.

\*Chart Groups are is ideally suited for viewing and organizing Pilot Charts.

\* For quick switching between consecutive Pilot Charts the chart buttons in the ChartBar is organized from left to right.

## Download Pilot Charts

### [Download Pilot Charts from the main website](#)

The monthly Pilot Charts for The North Atlantic are split into four separate charts.

The Northern North Atlantic - the far north

The Central North Atlantic - main area

The Western North Atlantic - the Caribbean

The Mediterranean

The South Atlantic

Pilot Charts for The North Pacific Ocean

The monthly Pilot Charts for The South Pacific are split into two parts, the charts proper, and the information part.

The information part in The South Pacific is not a part of the Pilot Chart itself, as in the other oceans, due to lack of space.

Pilot Charts for the South Pacific

South Pacific Information Sheets

Pilot Charts for The Indian Ocean

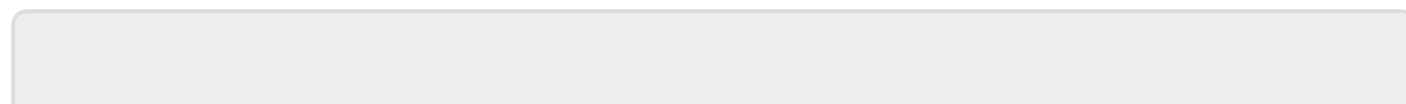
## Other useful charts

### [Download these charts from the Pilot Charts Page from the main website](#)

World Wide Magnetic Variation Chart 2010 -best viewed as a single chart. **Hit F9** to turn off quilting.

NOTE: The *WMM Plugin* is a better and easier way to view Variation.

BlueMarble World Chart



From:

<https://opencpn.org/wiki/dokuwiki/> - **OpenCPN Manuals**

Permanent link:

[https://opencpn.org/wiki/dokuwiki/doku.php?id=opencpn:manual\\_advanced:charts:pilotcharts](https://opencpn.org/wiki/dokuwiki/doku.php?id=opencpn:manual_advanced:charts:pilotcharts)

Last update: **2022/07/21 01:05**

